



SAPPHIRE ORIGIN REPORT

GIA REPORT 1142069154

November 28, 2011

Weight **7.53 carat**
 Measurements **10.37 x 9.15 x 7.93 mm**
 Shape **Octagonal**
 Cutting Style: **Step Cut**
 Transparency **Transparent**
 Color **Blue**

CONCLUSION

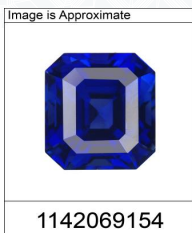
Species **NATURAL CORUNDUM**
 Variety **SAPPHIRE**
 Source Type **CMT Type I**
 Geographic Origin **SRI LANKA**

TREATMENT

Indications of heating (TE)

Comments:

Any statement on geographic origin is an expert opinion based on a collection of observations and analytical data.



| No Indications of Heating | Indications of Heating (no residue) | Indications of Heating with Residue in Fissures | | | | |
|---------------------------|-------------------------------------|---|-----|------------------------------|-----|---------------------------------|
| | | TE1 | TE2 | TE3 | TE4 | TE5 |
| No Indications of Heating | Indications of Heating | Minor Residue in Fissures | | Moderate Residue in Fissures | | Significant Residue in Fissures |



This is a digital representation of the original GIA Report. To verify the information herein, please refer to reportcheck.gia.edu. This Report is not a guarantee, valuation or appraisal and contains only the characteristics of the diamond described herein after it has been graded, tested, examined and analyzed by the laboratory providing this Report ("GIA") and/or has been inscribed using the techniques and equipment used by GIA at the time of the examination and/or inscription. Inscriptions reported in this document are not a guarantee, validation, or warranty of a diamond's quality, country of origin or source; or that the diamond will be identifiable by the inscription in the future (since inscriptions can be removed). GIA makes no representation concerning any trademark, word, or symbol which is inscribed by GIA or which is identified on this Report. The recipient of this Report may wish to consult a credentialed jeweler or gemologist about the information contained herein.

For terms, conditions, and limitations, see www.gia.edu/terms or call 800-421-7250 or 760-603-4500.